

# MONTHLY MEMBERSHIP PROGRESS REPORT

LOCATION NEW YORK

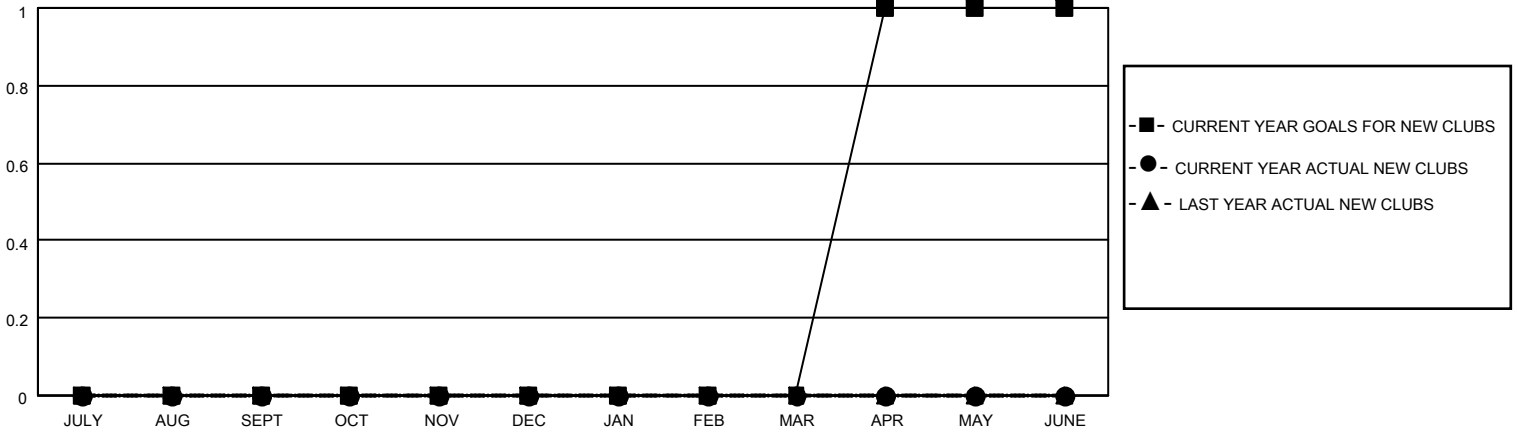
District 20 O

Results as of: 1/31/2021

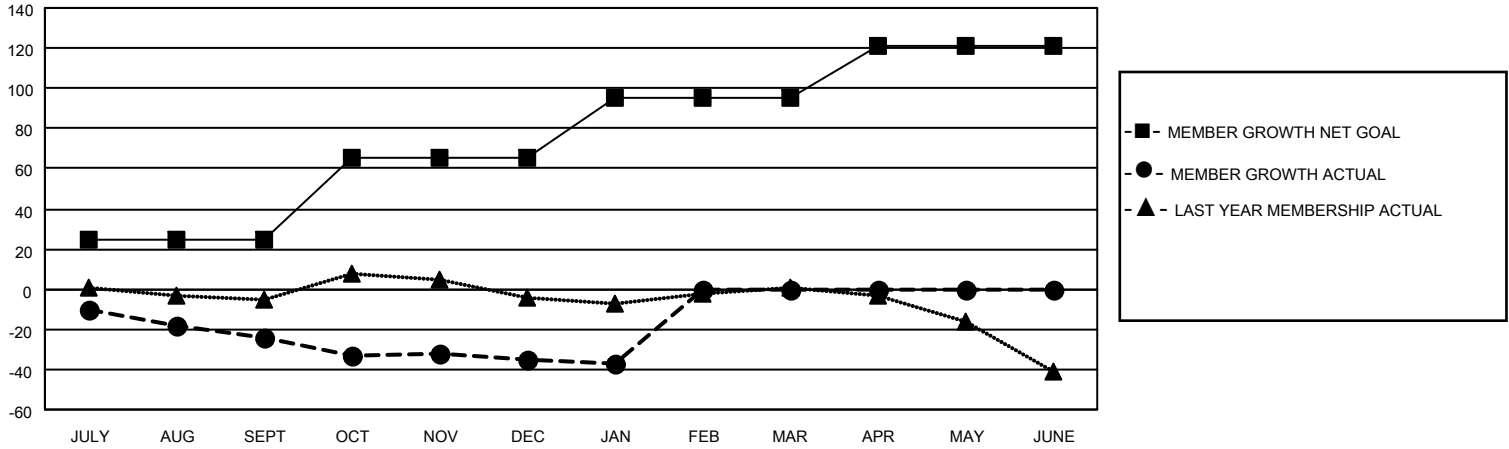
Clubs			
RESULTS FOR 2020-2021			
QUARTER	NEW CLUB GOAL	NEW CLUBS	DROPPED CLUBS
JULY/AUG/SEPT	0	0	0
OCT/NOV/DEC	0	0	1
JAN/FEB/MAR	0	0	0
APR/MAY/JUNE	1	0	0

Members			
RESULTS FOR 2020-2021			
QUARTER	MEMBER GROWTH NET GOAL	MEMBER GROWTH ACTUAL	DROPPED MEMBERS ACTUAL (including transfers)
JULY/AUG/SEPT	25	22	44
OCT/NOV/DEC	40	21	31
JAN/FEB/MAR	30	2	4
APR/MAY/JUNE	26	0	0

**GOALS AND ACTUAL NEW CLUBS CUMULATIVE**



**GOALS AND ACTUAL MEMBERS CUMULATIVE**



**DROPPED CLUBS: 1**

21 CLUBS OF 52 ADDED 1 OR MORE NEW MEMBERS

**GENDER DISTRIBUTION**

MALE 825 (60.66%)  
FEMALE 535 (39.34%)

**DROPPED MEMBERS**

[CLICK HERE FOR CUMULATIVE MEMBERSHIP DATA](#)

DECEASED	14
CLUB CANCELLED	6
OTHER	59
<b>TOTAL</b>	<b>79</b>

TOTAL FAMILY UNIT MEMBERS	328
FAMILY MEMBERS PAYING HALF DUES	172